

- For coupling a rotary encoder with blind hole (single-sided hollow shaft) to the drive shaft
- High torsional strength and torsional rigidity
- Very robust
- Compensation of axial and radial shaft offsets
- Material: **Stainless steel 1.4301**
Thickness 1 mm

KEY INFORMATION OVERVIEW

DESIGN

The anti-twist device is a bended plate of stainless steel with a thickness of 1 mm, so that the device is very robust.

It is fastened to the hollow shaft rotary encoder using 3 hexalobular (Torx®) screws M4 on the face end via the tapped flange holes.

A clamp ring secures the drive shaft in position in the hollow shaft.

FUNCTION

The anti-twist device fulfils the following tasks:

- Anti-twist device acts as a spring mass system for highly accurate measuring systems
- Coupling of the drive shaft and rotary encoder shaft with high torsional strength and torsional rigidity
- Compensation of installation-related axial and radial shaft offset between rotary encoder and drive shaft
- Compensation of the angular offset between drive shaft and rotary encoder shaft

TECHNICAL DATA

MECHANICAL DATA

Material Stainless steel 1.4301
 Thickness 1 mm

ENVIRONMENTAL DATA

Operating temperature range -40 °C to +85 °C

ORDER CODE FORMAT

ZVS | **58** - | **S** | **R** - | **K01**

ZVS	Anti-twist device		
58	For encoder with design form	42 58	ø 42 mm ø 58 mm
S	Flange	S K	Syncro flange Clamping flange
R	Material	R	Stainless steel 1.4301
K01	Mechanical variants*	01	Standard

ACCESSORIES (SCOPE OF DELIVERY)

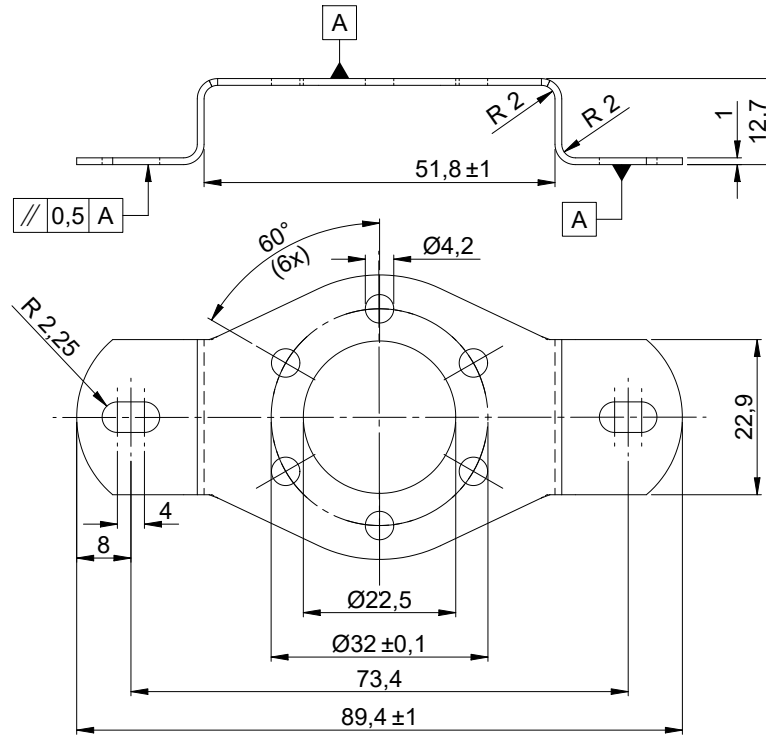
Designation	Quantity	Remark
Screw (with hexalobular socket, Torx®) M4x8, ISO14580, A2	3	For fastening on the rotary encoder
Lock washer S4, A2	3	

* The basic versions according to the data sheet bear number 01. Deviations are identified with a variant number and are documented in the factory.

INSTALLATION DRAWINGS

MODEL ZVS42-SR-K01

Dimensions in mm



MODEL ZVS58-SR-K01

Dimensions in mm

