

Mounting Accessories for Encoders, impulse generators and Potentiometers

e.g. Mounting clamps, couplings, reducing sleeves, insulating flanges, mounting brackets ...

Document no.: MZ 10111 OE

Date: 02.06.2020

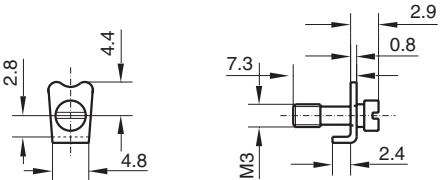
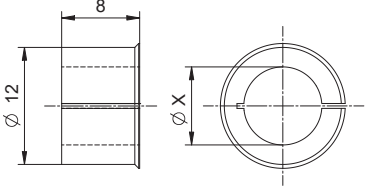
Synchro-clamps (each encoder requires 3 pieces)

Application: As standard, encoders are mounted via the mounting holes provided on the front face or via the synchronous shaft using mounting brackets. These are made of stainless steel. For mounting, 3 pieces are required in each case. Please do not use the mounting clamp KL14 for new developments.

Order code, material, dimensions in mm	use with model	mounting circle	requested screws
KL 58-2-S Stainless steel 1.4305 	Encoders series \varnothing 58 (e.g. DAB 58, CRE 58, SRE 58, TRD58-S, ...) Incremental encoder GIM 5100	\varnothing 78 ^{+0.5}	M4x10 counter sunk screw with hexagon socket DIN 7991/ 1.4305
KL 66-2-S Stainless steel 1.4305 	Encoders series \varnothing 66 or with clamping flange (e.g. CRE 66, SRE 66, TRD58-K, SLS 66, ...) CM 50 Kxx58 / Txx58-k Rxx36 / Txx36 Txx50	\varnothing 78 ^{+0.5} \varnothing 65 ^{+0.5} \varnothing 71 ^{+0.5} \varnothing 51 ^{+0.5} \varnothing 65 ^{+0.5}	M4x10 counter sunk screw with hexagon socket DIN 7991/ 1.4305
KL 65-S Stainless steel 1.4305 TZD 14589	Encoders series \varnothing 65 with synchro flange (e.g. z.B. DAB 58, CRE 58, SRE 58, TRD58-S, ...)	\varnothing 78 ^{+0.5}	M4x10 counter sunk screw with hexagon socket DIN 7991/ 1.4305
KL 11-4 Ms nickel-plated 	Mounting Bracket MW 01, for model No. 58 (not for housing \varnothing 69) - see KL-58-2-S	\varnothing 64 ^{+0.5}	M4x10 counter sunk screw with hexagon socket DIN 7991/ 1.4305
KL 14 Ms nickel-plated 	Incremental encoder GIM 900	\varnothing 103 ^{+0.5}	M4x10 counter sunk screw with hexagon socket DIN 7991/ 1.4305

Mounting Accessories for Encoders, impulse generator and Potentiometers

Crabs / reducer for 12 mm clamping shaft

<i>Order code, material, dimensions in mm</i>	<i>use with model</i>	<i>mounting circle</i>	<i>requested screws</i>
RW 07 Stainless steel 1.4305 	Potentiometer PP 22S, Rotary encoder 78, HR 44, H 50, 206	∅ depending on housing diameter	-
<i>Order code, material, dimensions in mm</i>	<i>use with model</i>	<i>Material</i>	
Reducing sleeves ZRH-A-12-X X = 6, 6.35, 8, 9.53, 10 	Encoders with 12 mm clamping shaft Txx58-SR	Aluminium	

Couplings for encoder (selection)

Application: For the adaptation of the encoder shaft to the drive shaft, couplings are used, which reduce the offset (axial, radial and angular) and transmit torques. Depending on the Design and application different types of couplings e.g. clamp couplings, bellows-type couplings lungs and many others. In the data sheets listed below you will find the respective technical specification. TWK has two relevant products from its extensive range of couplings Coupling types off selected. For special applications we refer to the very complex and extensive market. Please contact us in this regard.

Description	Data sheet
Backlash-free clamp coupling model KK14	KK 12301
Bellow coupling model BKM successor model 393	BKM 11995
Bellow coupling model BKK successor model 493	BKK 11840

Mounting Accessories for Encoders, impulse generator and Potentiometers

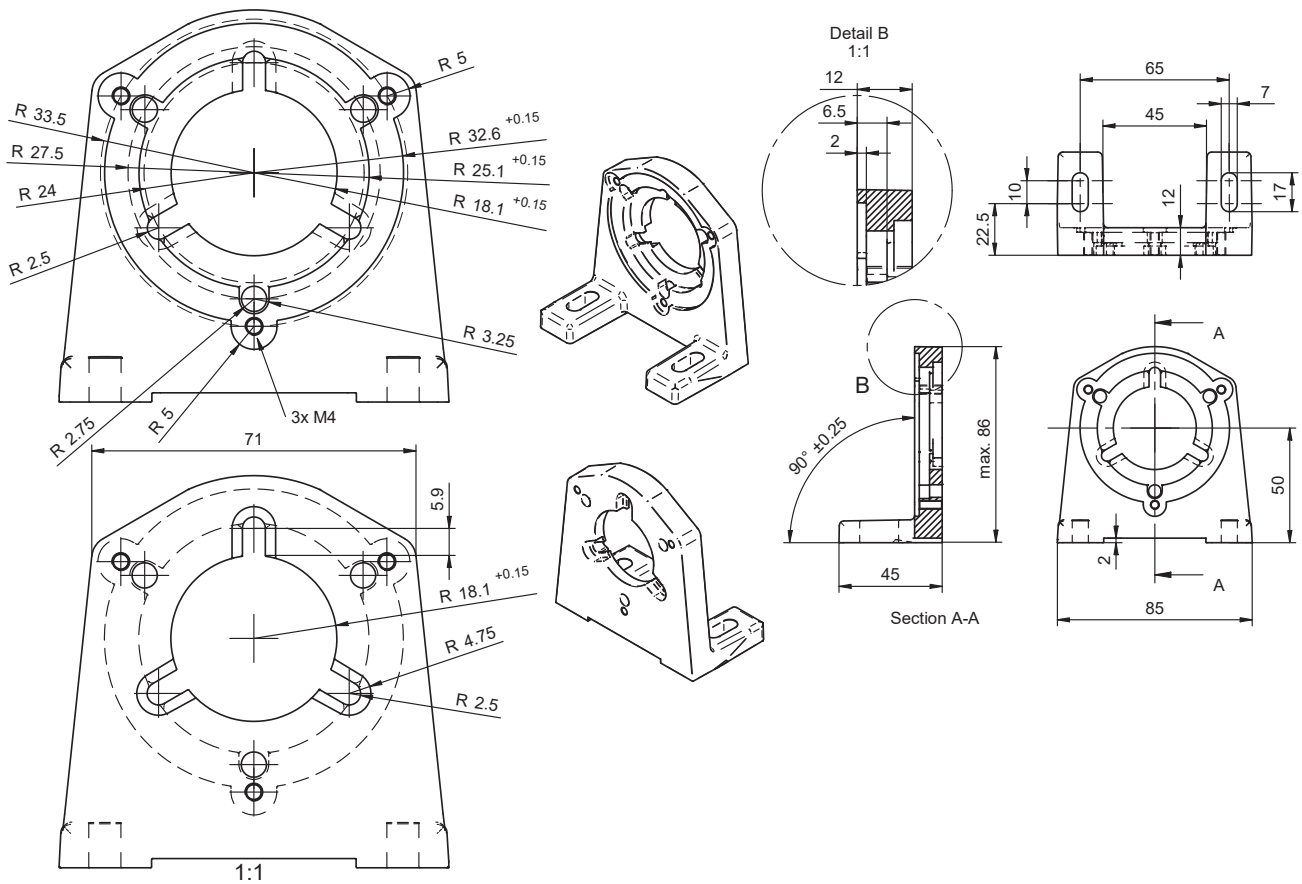
Mounting Bracket MW01

Mounting Bracket MW 01 (for model Nos. 58 and 65)

Application: The mounting brackets allow the encoder to be mounted separately and arranged mechanically on the system or machine according to the application.

Material: Die-cast aluminium

Dimensions in mm



Mounting Accessories for Encoders, impulse generator and Potentiometers

Mounting Bracket MW-X-02

Mounting Bracket MW-X-02

Application: For encoders with clamping flange.
(Scope of delivery: Including mounting material, see drawing)

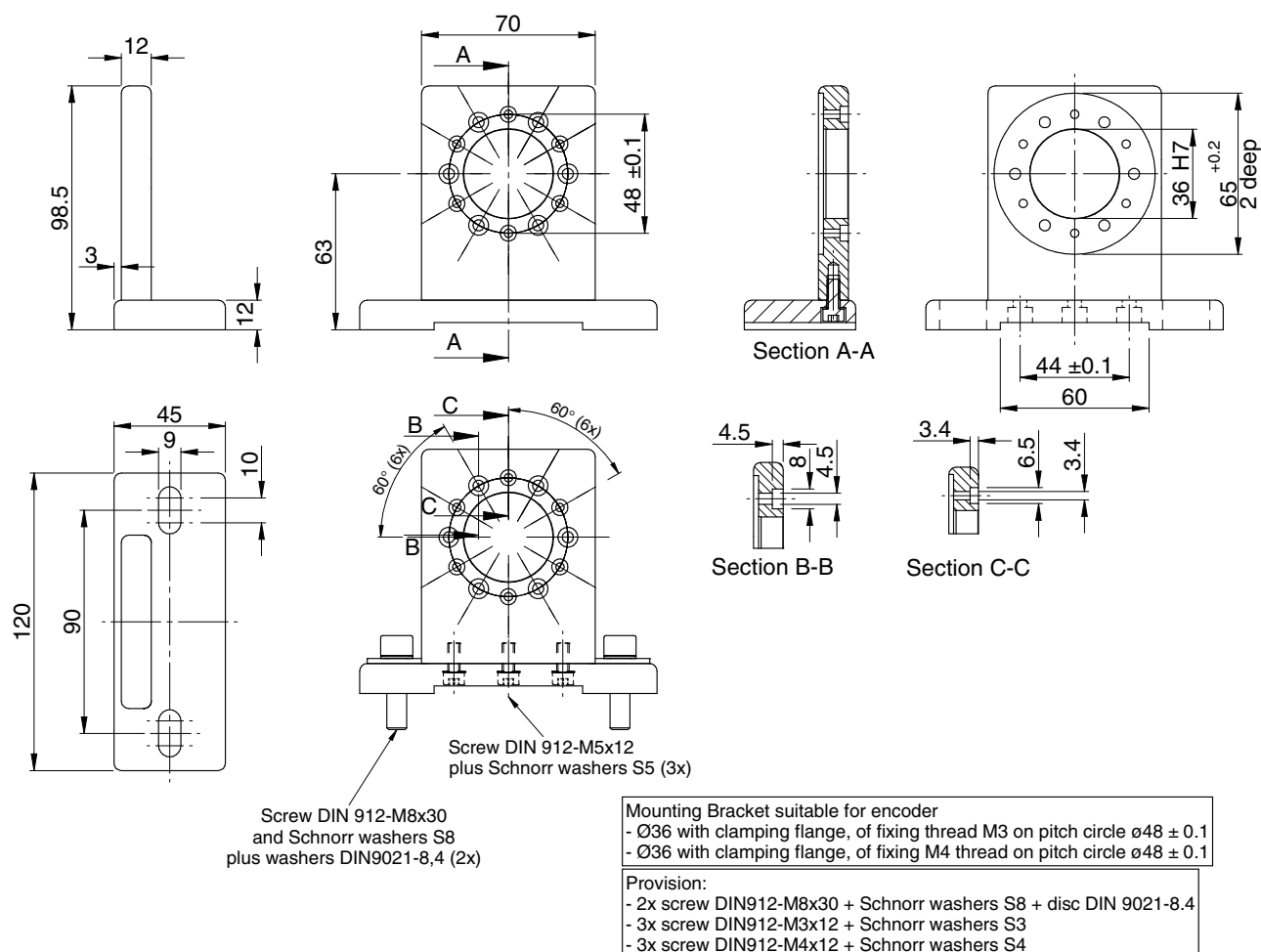
Mounting Bracket MW-S-02 (Stainless steel 1.4404)

The mounting brackets MW-V-02 are designed for encoders with clamping flange $\varnothing 36$ mm and mounting thread M3 or M4 on Pitch circle diameter $\varnothing 48 \pm 0.1$ mm (e.g.: TRN58 - KV xxxxx, see data sheet TBN/TRN 14271).

Mounting Bracket MW-A-02 (Aluminium)

The mounting brackets MW-A-02 are designed for encoders with clamping flange $\varnothing 36$ mm and mounting thread M3 or M4 on pitch circle diameter $\varnothing 48 \pm 0.1$ mm (e.g.: TBN58 - KA xxxxx, see data sheet TBN/TRN 14271).

Dimensions in mm



Mounting Accessories for Encoders, impulse generator and Potentiometers

Mounting Bracket MW-X-A03

Mounting Bracket MW-X-A03

Application: For encoder and electronic cam switch encoders with clamping flange
(Scope of delivery: Including mounting material, see drawing)

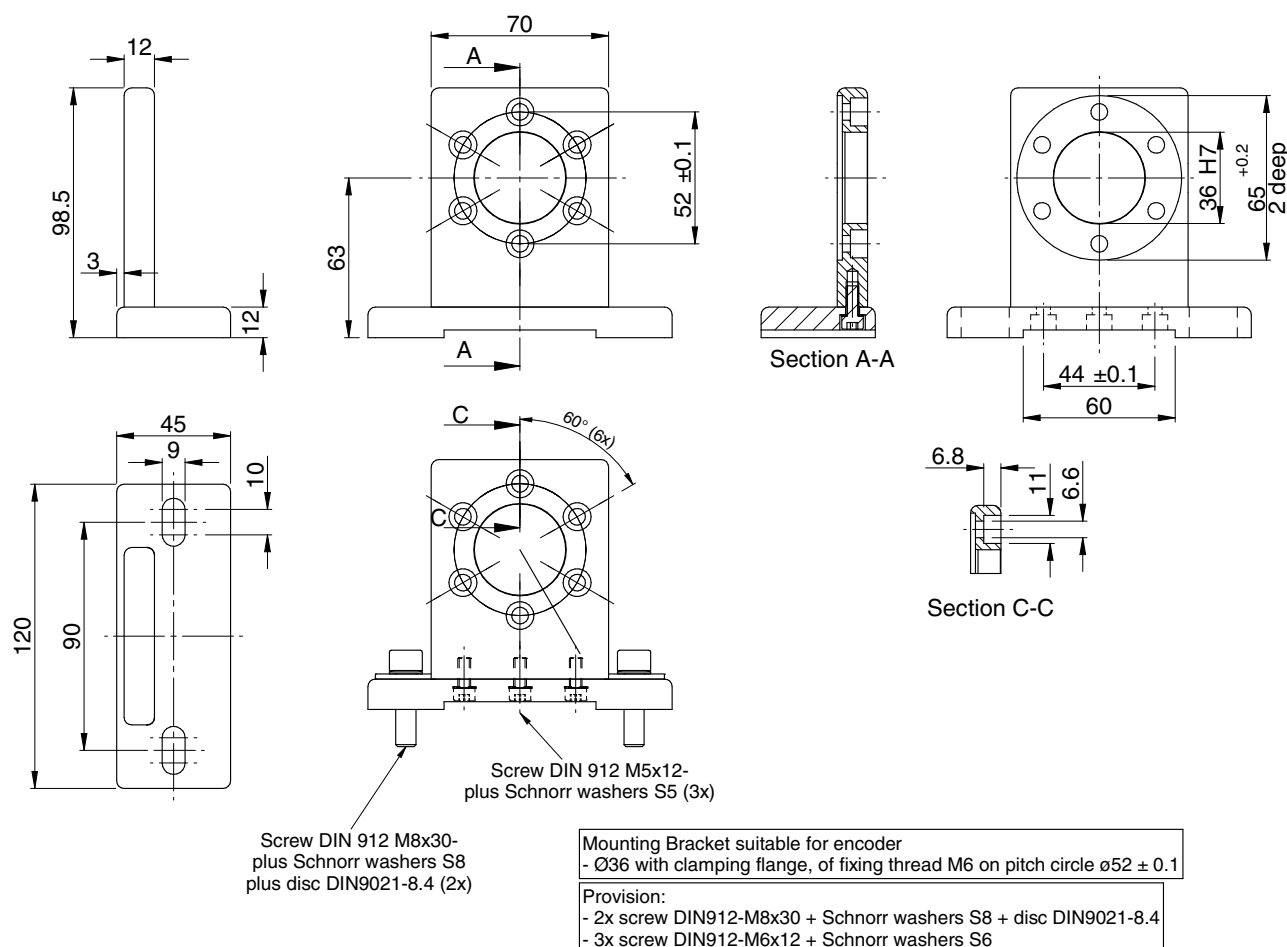
Mounting Bracket MW-S-03 (Stainless steel 1.4404)

The mounting brackets MW-V-03 are designed for encoders and cam switch units with cam switch unit flange with clamping flange $\text{Ø}36$ mm and mounting thread M6 on pitch circle diameter $\text{Ø}52 \pm 0.1$ mm (e.g.: NOCN64 - KPV xxxxx, see data sheet NOC13099)

Mounting Bracket MW-A-03 (Aluminium)

The mounting brackets MW-A-03 are designed for encoders and cam switch units with cam switch unit flange with clamping flange $\text{Ø}36$ mm and mounting thread M6 on pitch circle diameter $\text{Ø}52 \pm 0.1$ mm (e.g.: NOCN64 - KPA xxxxx, see data sheet NOC13099).

Dimensions in mm



Mounting Accessories for Encoders, impulse generator and Potentiometers

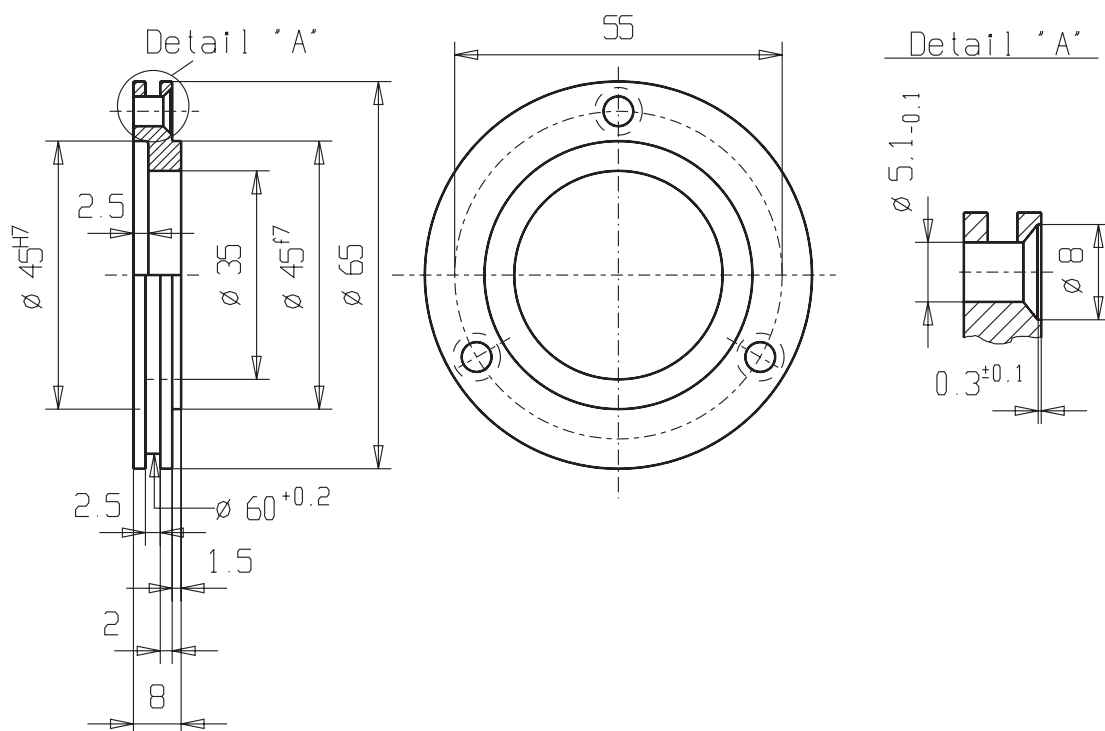
Insulating Flange FL01

Insulating Flange FL 01 (for model No. 65)

Application: The insulating flange FL01 enables the encoder to be mounted galvanically isolated from the machine ground (PE). In exceptional cases, this may be necessary in the application to ensure trouble-free operation of the encoder. The existing EMC criteria must be observed.

Material: Ertalyte (thermoplastic polyester)

Dimensions in mm

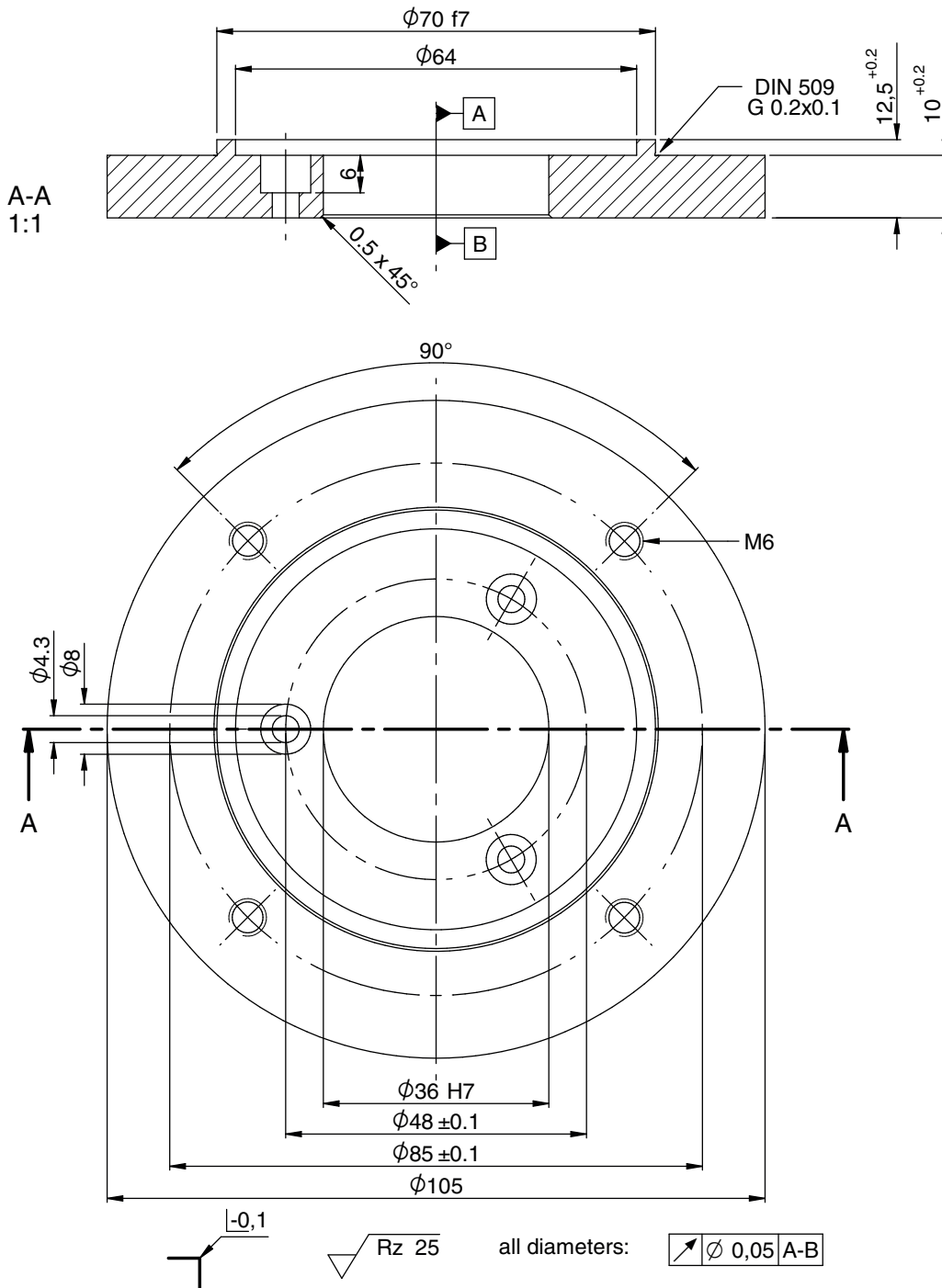


Mounting Accessories for Encoders, impulse generator and Potentiometers

Adapter flange ADAFLA-A01 for encoders in applications of design $\varnothing 105$

Application: The adapter flange ADAFLA-A01 (TZY15297) enables encoders of the $\varnothing 58\text{mm}$ design to be used with the clamping flange $\varnothing 36\text{mm}$ and a pitch circle diameter of $\varnothing 48 \pm 0.1 \text{ mm}$ in existing applications of design $\varnothing 105$ without having to make major changes to the design.

Dimensions in mm



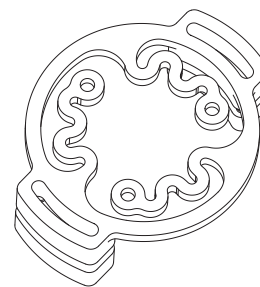
Mounting Accessories for Encoders, impulse generator and Potentiometers

Torque support ZMS58

Torque support ZMS58

Torque arm/stator clutch. Can be used as an encoder holder for shaft version 'clamping shaft' to compensate radial and axial play of the drive shaft. Type of construction Ø58mm.

See data sheet [ZMS 12939](#)



Backlash-compensating gear wheel ZRS

Backlash-compensating gear wheel ZRS

The measuring gear wheel ZRS allows backlash-free measurement of gear wheel or rack positions with the aid of a rotary encoder.

The permanently elastic plastic ensures that the flanks of a tooth are constantly in contact with the gear to be measured. A distortion of the measuring signal when changing between forward and backward rotation is thus prevented.

The tooth form is derived from the geometry of the involute toothing.

See data sheet [ZRS 11877](#)

