

■ **For example**

- **Mounting clamps**
- **Couplings**
- **Reducing sleeves**
- **Mounting brackets**
- **etc.**

**TORQUE SUPPORT AND GEAR WHEEL**

**TORQUE SUPPORT ZMS58**

The torque arm/stator clutch ZMS58 can be used as a holder for encoder with 58 mm design form and clamping shaft. It compensates radial and axial offsets between encoder and drive shaft.

**ZMS58**..... Datasheet [12939](#)

**PLAY COMPENSATING GEAR WHEEL ZRS**

The measuring gear wheel ZRS allows play compensating measurement of the position of a gear wheel or a gear rack with the aid of a rotary encoder. The permanently elastic plastic ensures that the flanks of a tooth are constantly in contact with the gear to be measured. A distortion of the measuring signal when changing between forward and backward rotation is thus prevented.

The tooth form is derived from the geometry of the involute toothing.

**ZRS**..... Datasheet [11877](#)

**SYNCHRO CLAMPS**

As standard, encoders are mounted via the mounting holes provided on the front face or via the synchronous shaft using mounting clamps. These are made of stainless steel. For mounting, 3 pieces are required in each case. Please do not use the mounting clamp KL14 for new developments.

Order number, material, dimensions in mm	Use with model	Mounting circle	Recommended screws
<b>KL 58-2-S</b> Stainless steel 1.4305 	Encoders series $\varnothing$ 58 TRX58-S, DAB 58 CRE 58, ... Incremental encoder GIM 5100	$\varnothing$ 78 <sup>+0.5</sup>	M4x10 counter sunk screw with hexagon socket DIN 7991/1.4305
<b>KL 66-2-S</b> Stainless steel 1.4305 	Encoders series $\varnothing$ 66 resp. clamping flange CRE 66 CM 50 Kxx58 / Txx58-K Rxx36 / Txx36 Txx50	$\varnothing$ 78 <sup>+0.5</sup> $\varnothing$ 65 <sup>+0.5</sup> $\varnothing$ 71 <sup>+0.5</sup> $\varnothing$ 51 <sup>+0.5</sup> $\varnothing$ 65 <sup>+0.5</sup>	M4x10 counter sunk screw with hexagon socket DIN 7991/1.4305
<b>KL 65-S</b> Stainless steel 1.4305 	Encoders series $\varnothing$ 65 with synchro flange DAB65 CRE65	$\varnothing$ 78 <sup>+0.5</sup>	M4x10 counter sunk screw with hexagon socket DIN 7991/1.4305
<b>KL 11-4</b> Ms nickel-plated 	Mounting Bracket MW-A-04	$\varnothing$ 67 <sup>+0.5</sup>	M4x10 counter sunk screw with hexagon socket DIN 7991/1.4305
<b>KL 14</b> Ms nickel-plated 	Incremental encoder GIM 900	$\varnothing$ 103 <sup>+0.5</sup>	M4x10 counter sunk screw with hexagon socket DIN 7991/1.4305



**MOUNTING BRACKETS**

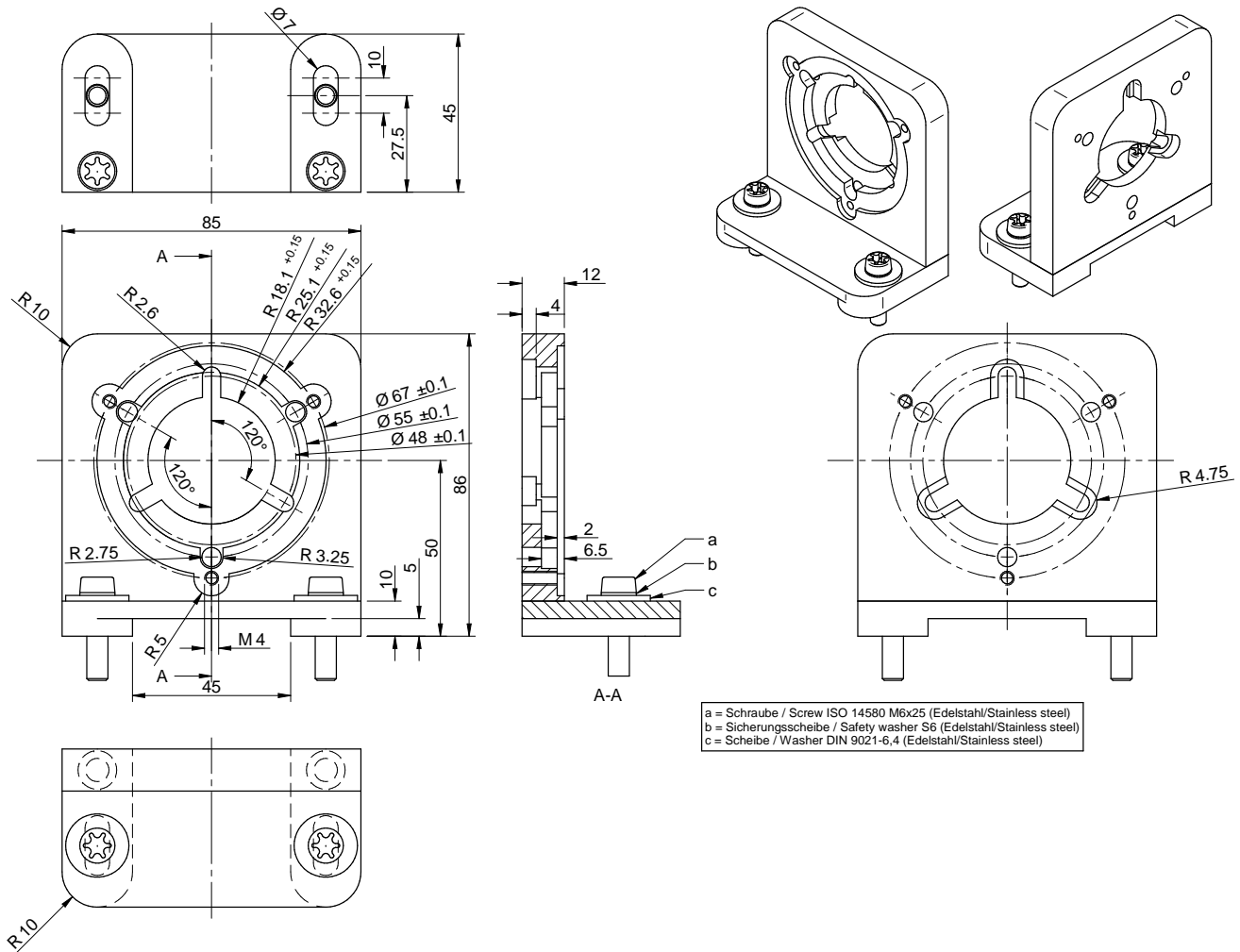
**MW-X-04**

The mounting brackets MW-X-04 are designed for encoder with design form 58-S, 58-K and 65-S. They can be mounted via the flange bores. In addition, rotary encoders with a diameter of 58 mm can be attached to the mounting brackets via the synchronous groove using the matching KL11-4 mounting clamps on the M4 threads (pitch circle 67 mm).

Design form	Flange type	Pitch circle
58-S	Synchro flange	42 mm
58-K	Clamping flange, $\varnothing 36$ mm	48 mm
65-S	Synchro flange	55 mm

(Scope of delivery: Including mounting material, see drawing)

Dimensions in mm



**MATERIALS USED**

**Mounting Bracket MW-A-04**

Aluminium . . . . . AlMgSi1, 3.2315

**Mounting Bracket MW-S-04**

Stainless steel . . . . . 1.4404

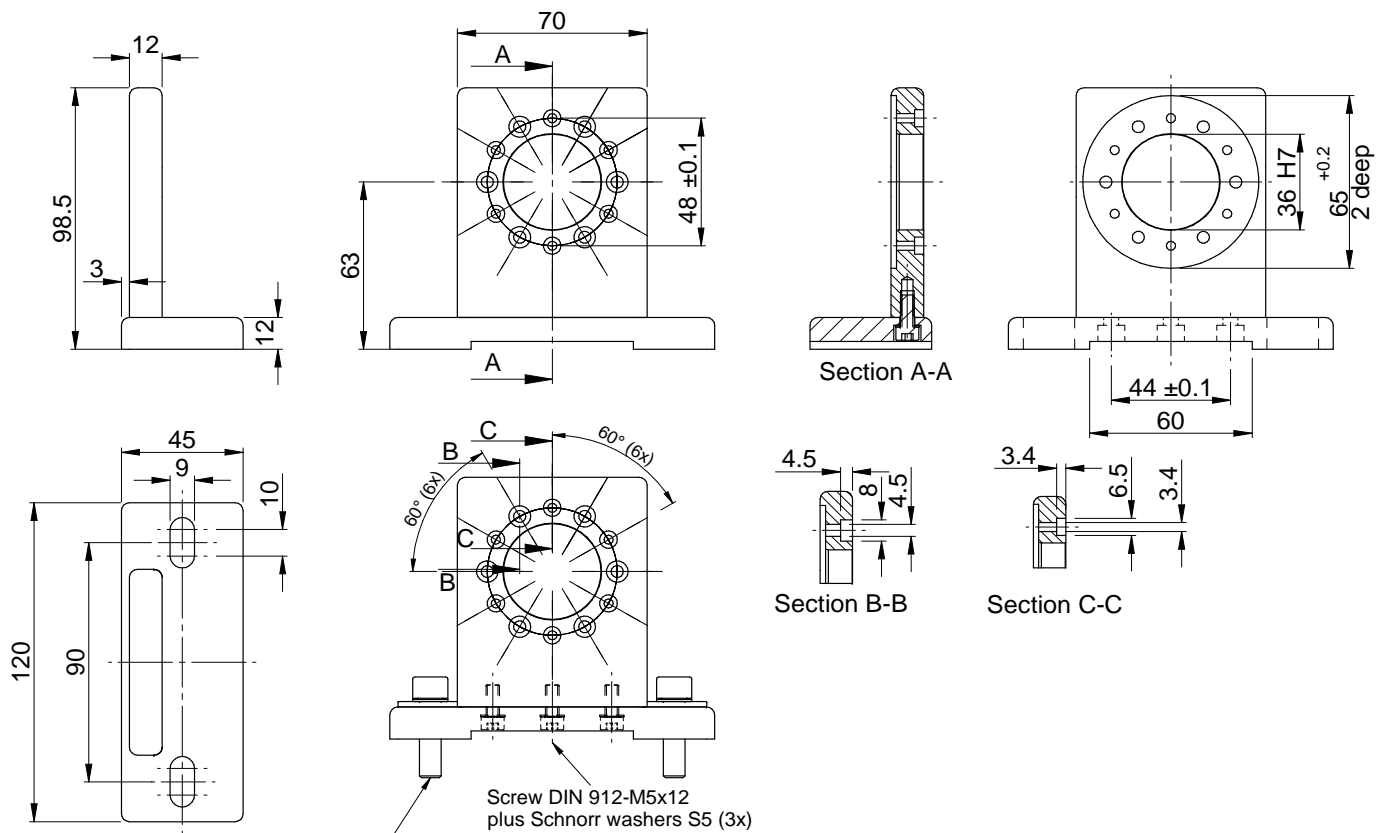
**MOUNTING BRACKETS**

**MW-X-02**

The mounting brackets MW-X-02 are designed for encoders with clamping flange  $\varnothing 36$  mm and mounting thread M3 or M4 on Pitch circle diameter  $\varnothing 48 \pm 0.1$  mm (e.g.: TRN58 - KV, see data sheet TBN / TRN 14271).

Scope of delivery: Including mounting material, (see drawing)

Dimensions in mm



<p>Mounting Bracket suitable for encoder</p> <ul style="list-style-type: none"> <li>- <math>\varnothing 36</math> with clamping flange, of fixing thread M3 on pitch circle <math>\varnothing 48 \pm 0.1</math></li> <li>- <math>\varnothing 36</math> with clamping flange, of fixing M4 thread on pitch circle <math>\varnothing 48 \pm 0.1</math></li> </ul> <p>Provision:</p> <ul style="list-style-type: none"> <li>- 2x screw DIN912-M8x30 + Schnorr washers S8 + disc DIN 9021-8.4</li> <li>- 3x screw DIN912-M3x12 + Schnorr washers S3</li> <li>- 3x screw DIN912-M4x12 + Schnorr washers S4</li> </ul>
--

**MATERIALS USED**

**Mounting Bracket MW-A-02**

Aluminium . . . . . AlMgSi1, 3.2315

**Mounting Bracket MW-S-02**

Stainless steel . . . . . 1.4404

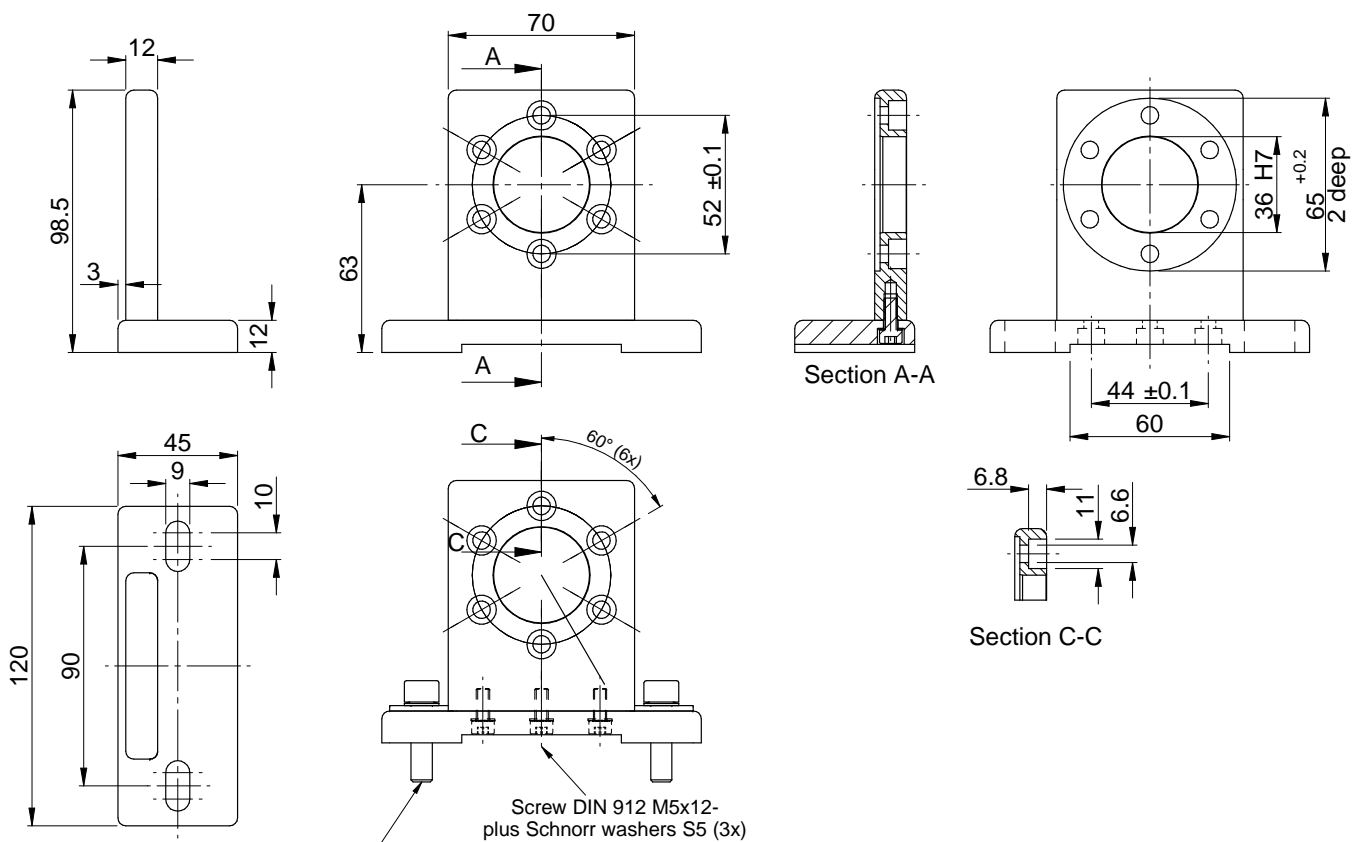
**MOUNTING BRACKETS**

**MW-X-03**

The mounting brackets MW-X-03 are designed for encoders and cam switch units with cam switch unit flange with clamping flange Ø36 mm and mounting thread M6 on pitch circle diameter Ø52 ± 0.1 mm (e.g.: NOCN64 - KPV xxxxx, see data sheet NOC13099)

(Scope of delivery: Including mounting material, see drawing)

Dimensions in mm



Mounting Bracket suitable for encoder  
- Ø36 with clamping flange, of fixing thread M6 on pitch circle ø52 ± 0.1

Provision:  
- 2x screw DIN912-M8x30 + Schnorr washers S8 + disc DIN9021-8.4  
- 3x screw DIN912-M6x12 + Schnorr washers S6

**MATERIALS USED**

**Mounting Bracket MW-A-03**

Aluminium . . . . . AlMgSi1, 3.2315

**Mounting Bracket MW-S-03**

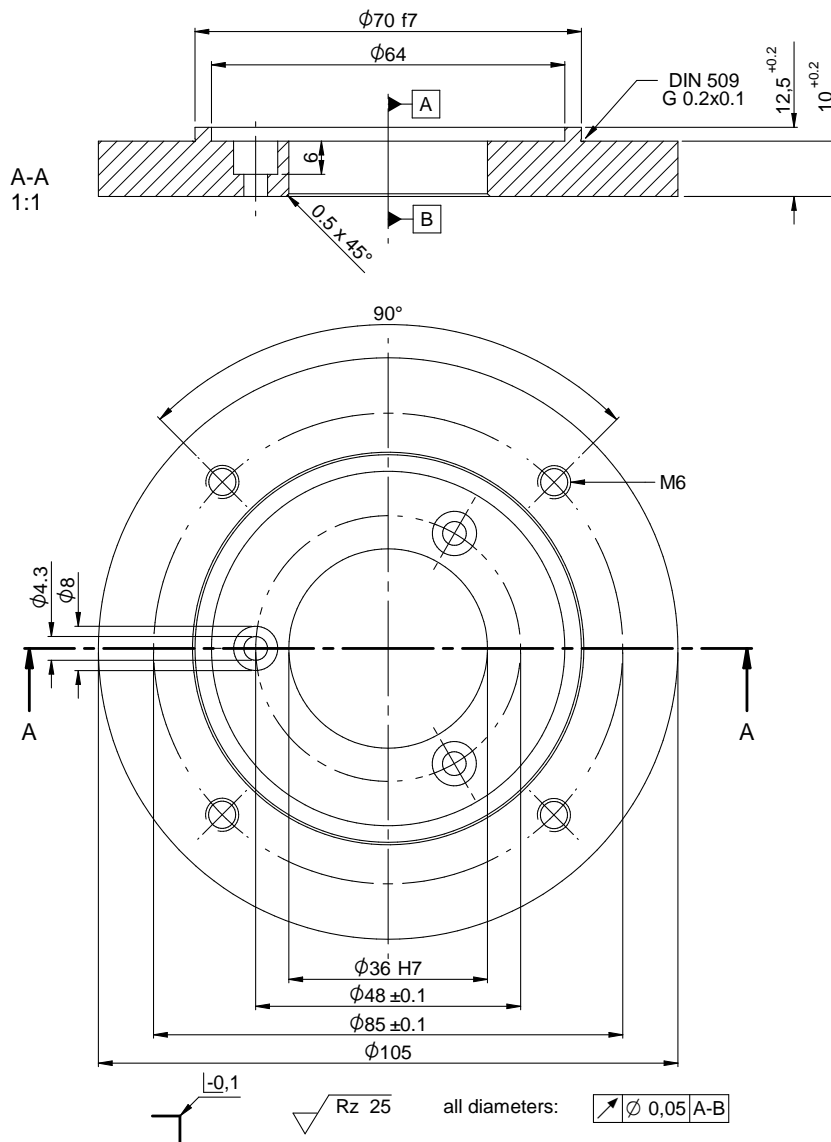
Stainless steel . . . . . 1.4404

**ADAPTER FLANGE**

**ADAFLA-A01**

The adapter flange ADAFLA-A01 is designed for using encoders TXX58-K in existing applications of design  $\varnothing 105$  without having to make major changes to the design.

Dimensions in mm



**MATERIALS USED**

**Adapter flange ADAFLA-A01**

Aluminium . . . . . AlMgSi1, 3.2315